



H4486 DIN Swing Check Valve

DIN Swing Check Valve



Figure:H4486
 Size:DN40-DN400
 Design Standard:DIN
 Face to Face:DIN3202-F6
 Flange Drilling:DIN2532;DIN2533 ect

Specification

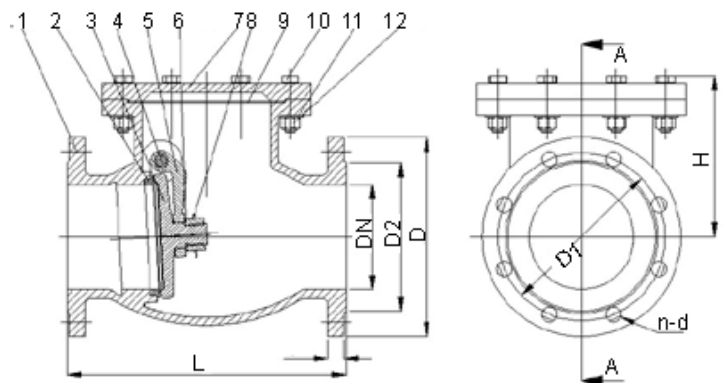
Flange dimensions :DIN2533
 Face to face:DIN3202-F6
 Testing confirm to DIN3230

Application

Working Temp:100 °C
 Working Pressure:PN10 or PN16
 Suitable Media:Water,Steam,Oil ect.
 Not recommended for Steam Service.
 Caution:FREEZING WEATHER PRECAUTION - Subsequent to testing a piping system,check valves should be left in an open position to allow complete drainage.

Materials

No	Part Name	Materials	
1	Body	ASTM A126A(B)	GG20 GG25
2	Seat Ring	ASTM B36/B62,SS410	Brass, Bronze
3	Disc	ASTM A126A(B)	GG20 GG25
4	Hinge Pin	A216 WCB	GS-C25
5	Hinge	ASTM A126A(B)	GG20 GG25
6	Nut	A216 WCB	GS-C25
7	Bonnet	ASTM A126A(B)	GG20 GG25
8	Split Pin	A216 WCB	GS-C25
9	Bonnet Gasket	Graphite	Graphite





BIAOYI

H4486 DIN Swing Check Valve

Dimensions

DN	D	D1	D2	L	H	b	n	d
50	165	125	102	200	150	17	4	18
65	185	145	122	240	160	17	4	18
80	200	160	138	260	170	19	8	18
100	220	180	158	300	180	21	8	18
125	250	210	188	350	215	23	8	18
150	285	240	212	400	260	23	8	23
200	340	295	268	500	294	27	12	23
250	405	355	320	600	370	29	12	27
300	460	410	378	700	412	29	12	27
350	520	470	438	800	445	32	16	27
400	580	525	490	900	505	34	16	30